

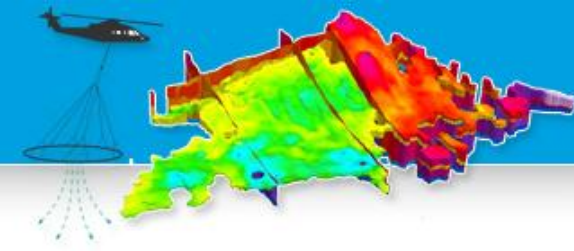
From data to knowledge

Aarhus Geophysics Aps in HyGEM

Ph.D. Andrea Viezzoli

Director
Andrea.viezzoli@aarhusgeo.com

About Aarhus Geophysics Aps



- Completely independent from any AEM contractor
- Main office in Aarhus, subsidiary in Pisa (IT)
- Clients worldwide

Aarhus Geophysics



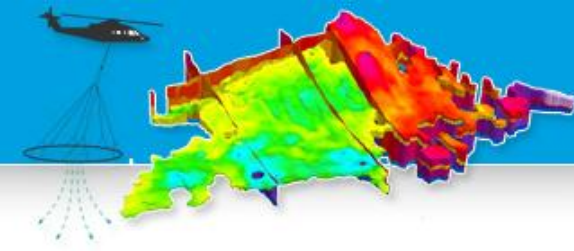
...from data to knowledge

AARHUS GEOPHYSICS

OFFERS STATE OF THE ART
CONSULTING IN AIRBORNE ELECTROMAGNETICS
AND UNIQUE SOFTWARE PRODUCTS FOR HANDLING,
PROCESSING AND INVERSION OF GEOPHYSICAL DATA.



Our BUSINESS: AEM for GW



1. Design the survey choosing the adequate AEM system
2. QC data acquisition
3. Processing and Inversion of the AEM data
 1. SkyTEM
 2. VTEM
 3. AeroTEM
 4. Fugro Resolve
 5. Fugro Tempest ...
4. Integration of AEM with other data

Aarhus Geophysics

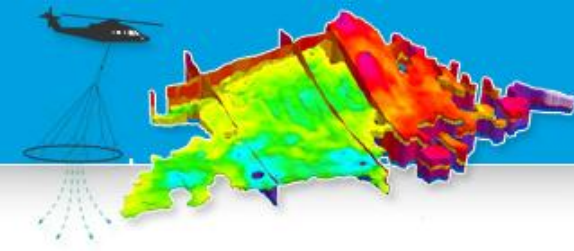


...from data to knowledge

CONSULTING in Airborne Electromagnetics

FROM QUALITATIVE, TO QUANTITATIVE
THROUGH ACCURACY

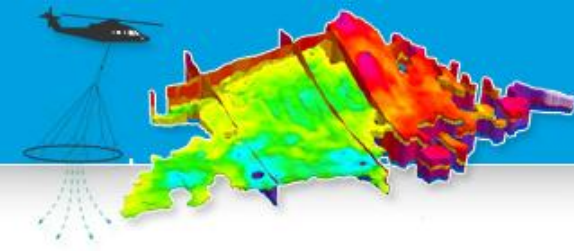




- Leader of WP1 (*Hydrological-geophysical mapping and method development*)
 - Data acquisition
 - New SkyTEM survey
 - MRS
 - Geophysical borehole logging
 - Further development of SkyTEM system
 - Noise reduction
 - Early times
 - Further development of MRS methodology
 - Noise reduction
- Partner in WP2
- Partner in WP6



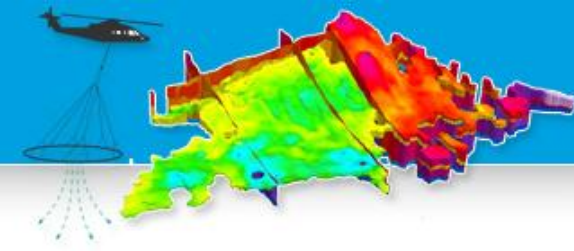
People involved, and key expertise



- Andrea Viezzoli
 - Director of Aarhus Geophysics
 - Bachelor in Physics, Ph.D. in Geophysics
 - Experience in AEM data processing, inversion, (lower extent) integration with other data. Past in IP... then I got fed up of electrodes
- Antonio Menghini
 - M.Sc. in geology
 - Long experience in EM acquisition and interpretation for diverse geological application
 - Experience in, e.g., pump tests
- Camilla Soerensen
 - M.Sc. in geophysics
 - Experience in AEM and borehole geophysical logging

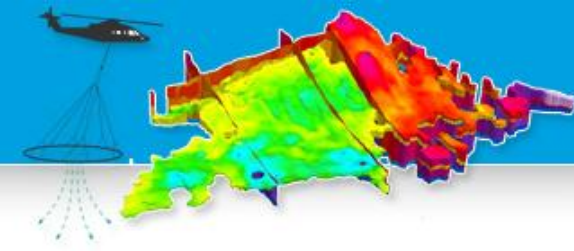


What we bring to the project



- Detailed data processing and inversion of the new AEM data
- Participate to further development and testing of
 - automated processing of raw AEM data
 - inversion of large AEM datasets
- Insight into integration of AEM data and
 - different geophysical datasets
 - different ancillary geological information
- Participate to communication





- Scientific level
 - Gain know how in coupling Hydrogeology and Geology with Geophysics
 - Keep at the forefront of accurate processing and inversion of AEM data
- Strategically
 - Be part of state of the art project that has the characteristics to be a turning point in the field of GW management
 - Being able to offer a more finite product to our clients in GW management

